

Stamp Method Recipe

Keywords

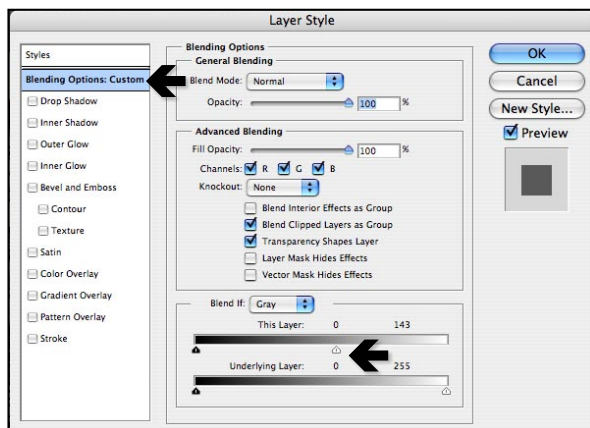
Photoshop, Filters, Layers, Merging, Style Effects

The Stamp Filter

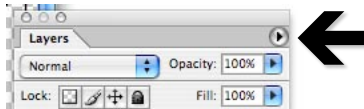
1. Duplicate your original photo and rename the new layer, **Stamp**. Hide the original but don't delete it.
2. Make sure the fore and background color pallets are set to default black and white.
3. Make sure the new Stamp layer is selected then choose **Filter > Sketch > Stamp** from the Menu Bar
 - Light and Dark should be set between 5 and 10
 - Smoothness should be set between 5 and 10
4. This should simplify the picture by only using black and white pixels.
5. Don't forget to save and save often.

Removing the white

1. Double click the Stamp layer to open the **Layer Style Dialogue Box**.
2. Hide the white pixels in the layer by using the **Blend If** option at the bottom of the box. Move the white triangle slider of the bar titled **"This Layer"** to the left until the white pixels in the Stamp layer are almost gone.



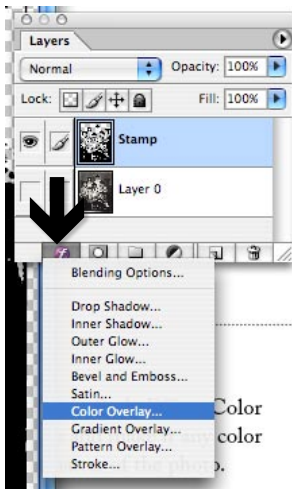
3. Currently the layer's white pixels are only being hidden. To permanently remove them you will have to use a hack. First, create a new blank layer above the stamp layer.
4. Select both the Stamp layer and the new blank layer by clicking them while pressing the Shift Key.
5. When the layers are both selected, choose **Merge Layers** from the **Layer Pallet's submenu**. The white pixels should now be permanently removed.



Changing the color

The color of a layer's contents can easily be changed by using the Layer Style Effect, Color Overlay. Since the white has been removed we can target the black and make it any color you wish.

1. To change the color choose **Color Overlay** from the **Layer Style menu** at the base of the Layers pallet. Change the color by double clicking the color selection box. I would choose a color that coordinates with the subject matter of the photo.



Layering

1. To give the photo a bit more personality add a new but slightly different stamped version of your image by repeating the process on a new copy of the original photo. The new stamped layer should be under your first one.
2. This time when applying the Stamp Filter **increase the Light Dark to between 10 and 15**. This will make the lines thicker.
3. Apply a color overlay using a different color then use the Move Tool to move the new stamped layer a smidge to offset it.

